

**ADAPTIVE THRESHOLDING AND MORPHOLOGICAL ALGORITHM FOR  
MONITORING AND TRACKING OIL SPILLS**Mukta Jagdish<sup>1</sup>, Dr.Jerritta.S<sup>2</sup>

<sup>1</sup> Research Scholar, Department of Computer Science and Engineering, School of Engineering, Vels Institute of Science Technology & Advanced Studies (VISTAS), Vels University, Chennai, TN, India.

<sup>2</sup> Research Supervisor, Associate Professor (Electronics and Communication Engineering), School of Engineering, Vels Institute of Science Technology & Advanced Studies (VISTAS), Vels University, Chennai, TN, India.

**ABSTRACT:-** This work aimed to compare adaptive thresholding and morphological techniques for oil spill detection and identification using ASAR images in Gulf of Mexico. This comparing of algorithms helps us to find out tracking of oil spill, oil spill area, dark patches and spill patterns in radar images which help in regular monitoring of oil spill coverage area. As we know histogram based analysis requires one pass through pixel in satellite image. Morphological operation is based on the structure analysis, in which some components are selected among all, which satisfy Gestalt principles such as (1) Proximity state that two objects are easier regard as a single object by a human being if those objects are close to each other. (2) Good continuation states that objects are easier regard as a single object if they can be continued from one to other. After analysing both algorithm it results that morphological algorithm is more suitable for detection of oil spill with less time duration using radar images than adaptive thresholding technique.

**KEYWORDS-** Oil spill, pattern, tracking, Morphological Techniques, adaptive thresholding.

**I. INTRODUCTION**

Oil spill is one of the most important problem occurs in the world which become one of the biggest issue in marine life. So regular monitoring is important, which helps to solve problems based on oil spill. Extraction of oil from ocean is a fundamental work done for agencies to regular monitoring the sea. In this scenario satellite image play an important role for data acquisition. In ever year oil spill accident take place in history it was on the Gulf of Mexico in Deepwater Horizon on April, 20, 2010, with explosion in July 15, 2010. It effected on wildlife habitats and maritime spices. To overcome this problem radar image was used for regular monitoring which improves over all oil spill problems by various approaches. To survey oil spill SAR image provide various advantage for detection and tracking of oil spills. Several satellite SAR sensors are involved in the oil spill detection and survey. These data are from ERS-1/2, (Brekke and Solberg 2005) ENVISAT (Marghany 2013), ALOS, (Zhang et al. 2011, 2012), RADARSAT-1/2, (Zhang et al. 2012) and TerraSAR-X (Velotto et al. 2011) which have been globally used to identify and monitor the oil-spill. Recently, the multi polarimetric SAR high-resolution data have become a vital research area for oil spill detection (Skrunes et al. 2012; Shirvany et al. 2012). Oil spill detection and monitoring using SAR technology, data are scarce job, because of barely discrimination between oil spill and other features of look-alike ,shadows, wind speed that appear patches in SAR data as Dark patches (Topouzelis 2008). The problems faced in oil spill automatic using SAR data, is achievements in past decades. Simultaneously, Frate et al. (2000) proposed semi-automatic oil spill detection by using neural network, in which a vector defining features of an oil-spill is used. Topouzelis et al. (2007, 2009) and Marghany, Hashim (2011) confirmed that neural network technique could give precise difference among look-alike and oil- spill in SAR data. Topouzelis et al. (2007) has used neural networks in finding both oil-spill and dark patches detection. Experimental results shows, 89 % accuracy and 94 % dark patches segmentation but certain disadvantages like they cannot efficiently detect small and fresh spills. Skrunes et al. (2012), reports that there are several disadvantages associated with SAR sensors based oil spill detection. So they suggested using multi-polarization acquisition data, such as Terra SAR-X satellites and RADARSAT-2.

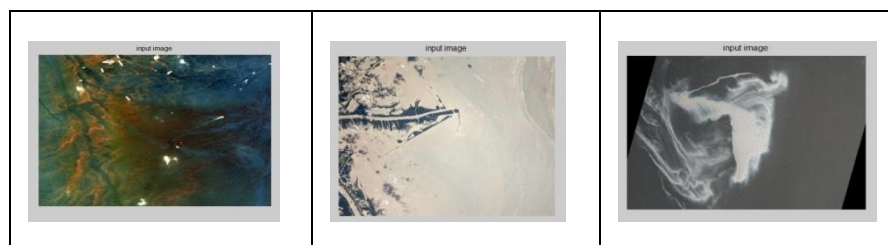


## II. DATA ACQUIRED

In this study, RADARSAT-2 SAR data acquired by RADARSAT-2 operating with Scan SAR Narrow single mode beam on 27<sup>th</sup> April, 2010; 1<sup>st</sup> May 2010; and 3<sup>rd</sup> May, 2010 are investigated for detection of oil spill in the Gulf of Mexico. The satellite armed with Synthetic Aperture Radar (SAR) with multiple modes of polarization, which includes fully polar metric mode of operation in which HH, VV and VH polarized data's were acquired (Maurizio et al. 2012). It has got highest resolution of 1 m in Spotlight beam mode (Ultra Fine mode of 3 m) with 100 m of positional accuracy. In the Scan SAR Wide Beam mode (WBM), the SAR has nominal width of 500 km and 100 m imaging resolution. The ground data obtained are based on study of Garcia-Pineda et al. (2013) where majority of oil types are emulsion and silver sheen.

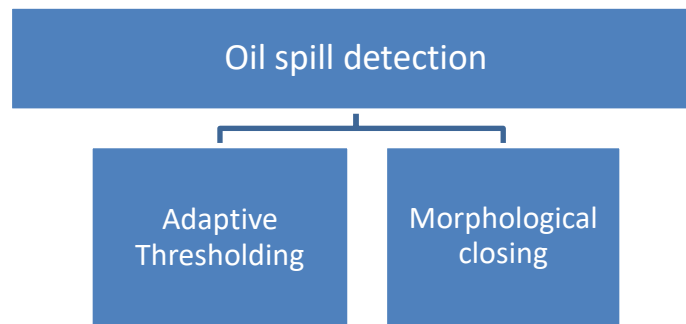
Sl. No	Beam mode	Place	Date	Nominal pixel spacing(m)	Resolution (m)	Incident angle	Polarization
1.	ENVISAT	Gulf Of Mexico	27 April 2010	25 x 25	79.9-37.7 x 60	20-55	HH
2.	ASAR	Gulf Of Mexico	1 May 2010	25 x 25	79.9-37.7 x 60	20-46	HH
3.	ENVISAT	Gulf Of Mexico	3 May 2010	25 x 25	79.9-37.7 x 60	25-50	HH
	ASAR	Gulf Of Mexico			79.9-37.7 x 60		HH

**Table1. ENVISAT ASAR IMAGE**



**Figure1. Input images**

### III. MATERIAL AND METHODOLOGY



**Figure2. Methodology**

#### A. Adaptive Thresholding

It helps to determine dark patches, bands and pattern for the given data set. Adaptive is important because radar contrast depends on condition of weather for detection of dark spot, look alike and surrounding water, which may change in investigation. In image threshold levels depends on angle incidence even in constant conditions in image. According to pre determined rule threshold level should changed. In mask operation mapping from one pixel to a new one's process take place, pixel modifies according to equation and are not dependent on neighborhood.

$f(p,q)=F[g(p,q)]$ , Where 'F' is input and output image with one to one mapping.

$$f(p,q)=(p+1,q),(p-1,q),(p,q+1),(p,q-1)$$

Adaptive help to produce segments with similar intensities, to determine boundaries and shape for the given images. It produces gray scale value with global and local image information.

$$\sigma_q^2 = n_1 (\mu_1 - \mu_2)^2 + n_2 (\mu_1 - \mu_2)^2$$

If denotes variance for the threshold silk smooth extracted using

$$(R)=1-\frac{1}{(1-\sigma^2)}, \text{ with standard deviation.}$$

#### B. Morphological operation

Morphological operation is based on the structure analysis, in which some components are selected among all, which satisfy Gestalt principles such as (1) Proximity state that two objects are easier regard as a single object by a human being if those objects are close to each other. (2) Good continuation states that objects are easier regard as a single object if they can be continued from one to other. According to these principles criteria have been developed. If both analyzed components are lines then first group of criteria is applied. Based on this criteria proximity is state as minimum of Euclidean distances between starting and ending points of these lines and the excellent continuation is determined by checking orientation difference. If both objects are not lines then second group of criteria is applied. Relation of lines to non-lines then third group of criteria is applied. The analysis is done by two routines: In-level routine and inter level routine.

In-level routine: It Analyzes level  $N = \{3, 2, 1\}$  component to gain oil slick structure. Structure is consist element that satisfy proximity criteria and good continuation criteria. The oil slick structure is selected from each component of level N that calls the inter-level routine to group or cluster it with the structures levels from lower.

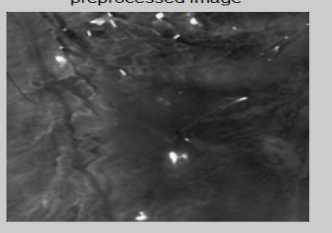
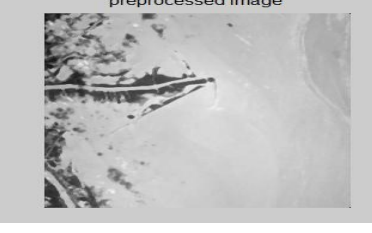




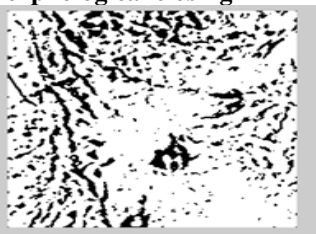


In Inter-level routine the component is given from a level  $N > 1$ , all component are search from level N-1 and component are find that satisfies criteria of Gestalt-based. Set current component, set level as  $N = N-1$ , then call Inter-level routine again,

then stop the analysis when current level show  $N = 1$  or no components present to analyze. Analysis start for gray level mask from level 4. This level represents lowest backscatter area in radar images. If level 4 gray contain few pixel then merge level 4 and level 3 that represent dark areas of the Synthetic aperture radar fragments with slick correspond look-alikes areas. The levels  $N = \{3, 2, 1\}$  routine is run to find oil slick structure which correspond to less-dark areas of SAR image. Then this structure passed to subsequent analysis for inter-level routine analysis. Components are selected in stages of analysis are retained in the image and other considered as noise.

#### IV. RESULTS AND DISCUSSION

In this approach, two different techniques were used which helps to regular monitoring and detection of oil spills in the ocean. This research work is carried out using SAR RADARSAT-2 image. This technique examined SAR image to find structure of the oil spill with levels of gray corresponding to less damp / most damped area of sea surface roughness. Radar images confirmed grey level mask containing structure of the slick in Gulf of Mexico. Oil spill happened on 27 April 2010 where crude oil spread in 49,500 km<sup>2</sup> across 19,112 square miles in Gulf of Mexico. As we know oil spill is one of the biggest issue in marine environment. Here two algorithms are applied to find out pattern, dark patches and tracking of oil spill with low time complexity in the given ENVISAT ASAR images. In this research different days images has been taken for regular monitor and observe occurrence of oil spill in ocean. For detection of oil spill incidence angle with HH polarization is suitable for research. According to HH polarization and incidence angles it helps to reduce noise which is created during bad weather conditions. For detection of spill ASAR width increase to 300km- 350km. Advance synthetic aperture radar provide high level of sensor images. Figure-3 indicates spills with patterns, dark patches, oil spill tracking and surrounding area of the images. To determine positive and negative pattern it compared with neighborhood pixels. In this paper after comparing two algorithms, it define morphological closing techniques is more convenient and good for oil spill detection because in ASAR images it slowly varies gray level point based on image location and positions which help to monitor and detect oil spill region in fast way with low time complexity based on different weather condition.

Figure3. Oil spill Detection Results

 <p>preprocessed image</p>	 <p>preprocessed image</p>	 <p>preprocessed image</p>
 <p><b>Adaptive Thresholding</b></p> <p>Time taken for 2.264546e-01 secs</p>	 <p>Time taken 2.226974e-01 secs</p>	 <p>Time taken 2.470920e-01 secs</p>
 <p><b>Morphological closing</b></p> <p>Time taken 2.799448e-01 secs</p>	 <p>Time taken 2.790913e-01 secs</p>	 <p>Time taken 2.470920e-01 secs</p>

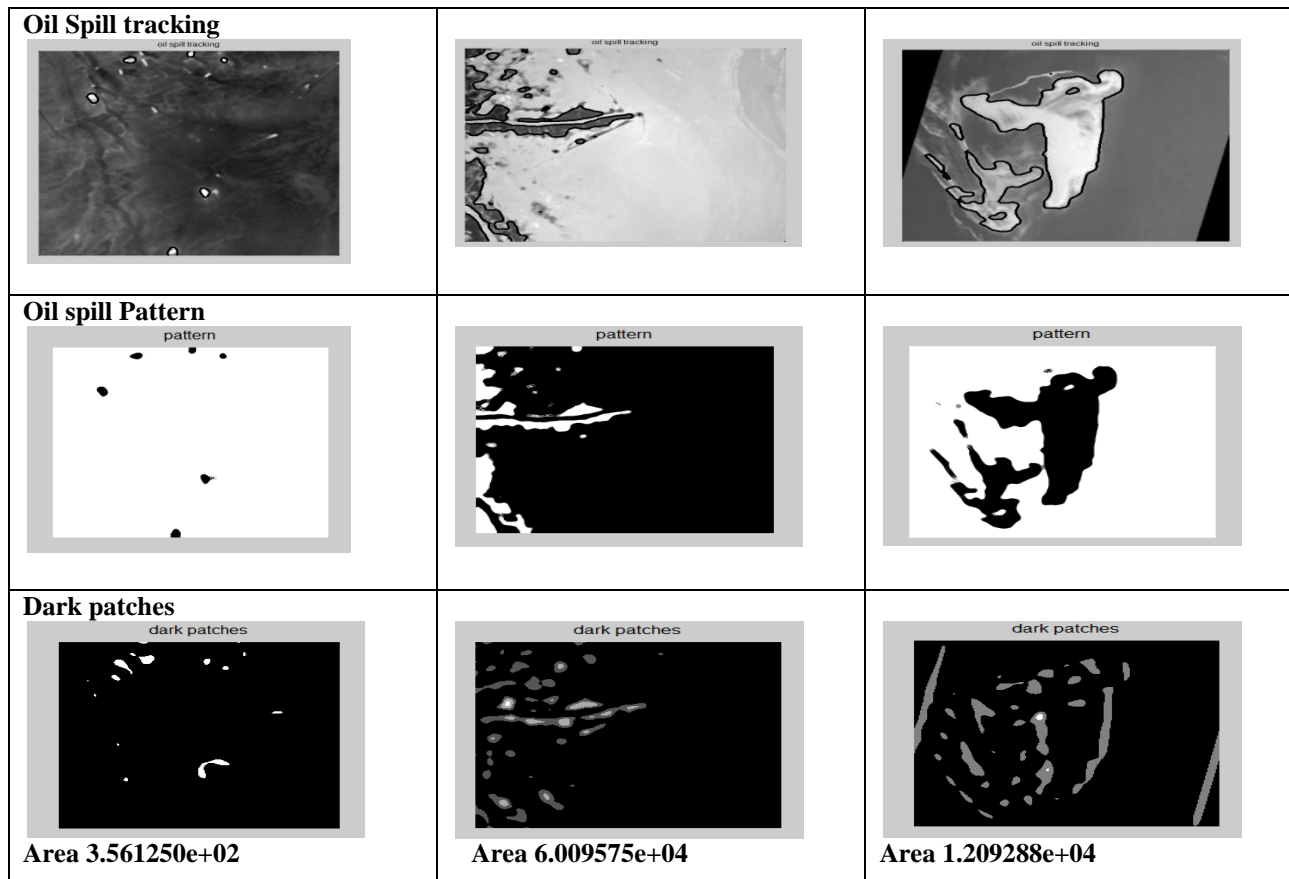


Table2. Experimental Results for oil spill Detection Time

Techniques used	Image 1	Image 2	Image 3
Adaptive thresholding	2.799448e-01secs	2.790913e-01secs	2.815672e-01secs
Morphological closing	2.264546e-01secs	2.226974e-01secs	2.470920e-01secs
<b>Coverage Area (m<sup>2</sup>)</b>	3.561250e+02	6.009575e+04	1.209288e+04

## V. CONCLUSION

This work aimed to compare adaptive thresholding and morphological techniques for oil spill detection and identification using ASAR images in Gulf of Mexico. This comparing of algorithms helps us to find out tracking of oil spill, oil spill area, dark patches and spill patterns in radar images which help in regular monitoring of oil spill coverage area. As we know histogram based analysis requires one pass through pixel in satellite image. Morphological operation is based on the structure analysis, in which some components are selected among all, which satisfy Gestalt principles such as (1) Proximity state that two objects are easier regard as a single object by a human being if those objects are close to each other. (2) Good continuation states that objects are easier regard as a single object if they can be continued from one to other. After analysing both algorithm it results that morphological algorithm is more suitable for detection of oil spill with less time duration using radar images than adaptive thresholding technique.



## **VI. REFERENCES**

- (1) T.Nishidaid, H.Harashsheh, T.Onumad, monitoring and detection oil spill, Environmental Modeling and Software, Science Direct, March 2007.
- (2) Albert Osei, Edmund C Merem, Data to detect environmental degradation, Remote Sens., Applied plant and soil science 21, March 2010.
- (3) Turgay Celik, unsupervised change detection for satellite image using Dual tree wavelet transform, IEEE transactions on geo science and remote sens. Vol-48, 3 March 2010.
- (4) Istein Johansen, Mark Reed Oil spill modeling, science and technology Bulletin, vol. 5, pp 16, 1999.
- (5) M. Marghany, Multi-Objective Evolutionary Algorithm for Oil Spill Detection, ICCSA,355-371, Springer 2014,
- (6) M. Marghany , Automatic detecting oil Gulf of Mexico, Environment and Earth Science, June 2015, Springer.
- (7) Maged Marghany, Detecting of oil spills in Gulf of Mexico using SAR Data, ISRS June 2016.
- (8) K.Karantzalos and D.Argialas, level set segmentation oil spill tracking.” International Journal of remote sensing (IJRS), Volume 29, November 2008.
- (9) H.S. Solberg, Detection of oil spill, Elsevier, Science Direct, Remote Sensing of Environment, November 2004.
- (10) M. Marghany, automatic reduction of oil spill from Satellite data. International symposium of the digital Earth IOP, July 2009.
- (11) D. Camassa, Adalsteinsson, R. Harenberg, Z. McLaughlin, S. Lin, Subsurface trapping of oil plumes in stratification, Oil Spill Monitoring and Modeling the Deepwater Horizon, Geophysical Monograph Series, 2011. Camilla Brekke, Anne H.S. Solberg. November 2004,”Oil spill Detection by satellite remote sensing.” Science Direct, Elsevier. Remote Sensing of Environment.
- (12) Van Genderen J and Marghany M, July 2009 Entropy automatic reduction of oil spill from RADARSAT-2 SAR Satellite data. International symposium of the digital Earth IOP conference 10.1088/1755-1315/18/10/01 2051.
- (13) Zhao J, Ghedira and Temini M, September 2014, Exploring the potential of optical remote sensing for oil spill detection in shallow coastal waters a case study in the Arabian Gulf, express 22:13755-13772.